



Panorama Apparels Ltd.

Company Profile



www.panoramabd.com

EST. 1991

About Us



Panorama Apparels Ltd. is an Accord-approved factory located in Gazipur. At present, our factory operates 19 lines and has the capacity to produce 700,000pcs of men's, boy's and ladies' shirts per month. We have all the modern facilities and are following all international standards.

Philosophy

Panorama Apparels Ltd. was established in 1991, pursuing a policy of honest, open, and ethical business. Sustaining long-term business rather than short-term gains is our motto. We strive to do business with customers who share a similar philosophy. We believe that the ultimate objective of the company is to make sure the products are ultimately acceptable to the individual consumer. This objective can only be attained by working with the customer's complete trust, understanding, and mutual cooperation. We are Accord-approved and are complying with all HR regulations for our workers and office staff set by the Bangladeshi Government.



Men's Wear



Men's Wear



Women's Wear



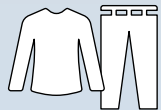
Boys' Wear



Manufacturing Practice

**Facility:**

Panorama Apparels Ltd. has over 20 years of experience in high quality garments manufacturing. We are a leading garments manufacturing institution.

**Products:**

All types of woven Products.

**Quality Management:**

Delivering quality products on time is our first priority. We have 19 lines of readymade garments production capacity and a strong workforce. We have Quality Assurance teams overseeing every phase of manufacturing .

Manufacturing Capability



Capacity
27,000 pcs/day

19 Line Capacity

1130 sewing machine

2300 workforce

Panorama Washing Co. LTD.



Capacity
70,000 pcs/day

Wash Type

- ✓ Enzyme Silicon wash
- ✓ Sand Silicon wash
- ✓ Sand wash
- ✓ Destroy wash
- ✓ Silicon wash
- ✓ Enzyme stone wash
- ✓ Stone wash
- ✓ Pigment wash
- ✓ Softener wash

Laboratory Testing Instruments

- ✓ Tumble washing machine.
- ✓ Tumble Dryer
- ✓ Oven (Lab tech)
- ✓ Orbital shaker machine.
- ✓ Crock meter (Healink)
- ✓ Button pull test machine
- ✓ PH Meter
- ✓ Tensile Strength Tester (TITAN)



In-house Testing Facilities

- ✓ CF to household laundering
- ✓ CF to dry rubbing / wet rubbing
- ✓ Dimensional stability to household laundering
- ✓ Twisting
- ✓ Appearance after washing 5 times
- ✓ Nickel In-house
- ✓ Button Pull Test
- ✓ CF to water
- ✓ CF to perspiration
- ✓ CF to saliva
- ✓ pH
- ✓ Tear Strength
- ✓ Steam slippage
- ✓ Other required tests can be outsourced

Equipment

- Plotter Machine (Richpeace)
- Auto Pattern Cutter(Richpeace)
- Brand PC - 6pcs
- CAD Marker Software (Richpeace)
- Digitizer (Richpeace)
- Digital photoshoot studio

Sample Capacity
50 pcs/day

40 sewing machine

41 workforce

Facilities

- Product Development
- Product Design
- Pattern Making
- Sample Making
- CAD System Marker Making for Cutting
- Consulting for production development





Professional Photo shoot studio

Facilities

- DSLR cameras and lenses.
- Two paper-roll backdrops with a variety of backdrop colors.
- Four remote activation photo strobe lights.
- Full air condition studio.
- Professional photography heavy tripod.



Our customers are top-tier retailers



ICT Strength

At Panorama Apparels Ltd. we keep our ICT facilities very modern and up-to-date to ensure optimal efficiency and security when processing orders placed by customers.

Our ICT system includes:



- Central ICT center
- Wide area network
- Enterprise Resource Planning (ERP)
- Online Attendance & Payroll System
- Hourly Digital Production Board by Smart TV .
- Online Production Monitoring System
- Data backup system
- CCTV System
- Efficient ICT workforce

Panorama Apparels Ltd. is certified by:



Our Achievements



Gold supplier award 2014, from H&M



Gold supplier award 2017, from Next sourcing BD

We Ensure Fire, Health and Structural Safety

Environment health & safety



- Material recycling
- Reduced pollution
- Clean drinking water
- Health and safety committee
- Dining hall
- Medical Center with trained Doctor
- Organization chart with manpower details
- Canteen facility
- Elected WPC committee
- Separate prayer room



- Structural plan
- Testing certificates
- Ventilation and lighting
- Electricity safety measures
- Proficient engineers
- Pest control
- Noise level assessment
- Air quality monitoring system
- GHG Measures
- Central addressable smoke detection system
- Fire certified personnel
- Fire safety trained employees
- Fire drill practice
- Evacuation plan on all floors
- Factory-wide emergency exit points
- Central Fire Safety monitoring system
- Standpipe system covering the whole factory
- All staircases isolated by fire door



We are maintaining the software system for HR Payroll and Compliance polices. By this way we can supervise statutory registers.

- Factory Code of Conduct
- Minimum Wage Policy
- Health and safety policy
- Anti-harassment & Anti-abuse Policy
- Child Labor Policy
- Recruitment Policy
- Leave Policy
- Forced Labor Policy
- Grievance Policy
- Environment Policy
- Child Care Facility
- Indicators/Direction from security gate onwards
- Suggestion box
- Effective water sewerage system
- Worker training
- Personal Protective Equipment Procedure
- Double salary for over time, Salary on date
- 2 Eid bonuses & a Bengali New Year's appreciation bonus
- Attendance bonus, Earn Leave Encashment
- Insurance, Track record
- Technical certificate
- Regular housekeeping
- CT-PAT
- Annual factory-wide events



CONTACT DETAILS



OUR MAIN OFFICE

Dhaka Trade Center (14th Floor), 99, Kazi Nazrul Islam Avenue Kawran Bazar, Dhaka-1215. Bangladesh.



PHONE NUMBER

0088-02-58152910, 9128021, 8119865, 91337507, 9131479



MAIL

info@panoramabd.com



WEB

www.panoramabd.com

Our Managements

Managing Director

M. M. Sohel

mmsohel@panoramabd.com

Director

Shamim Ahmed

shamim@panoramabd.com

General Manager, Commercial

Zakir Hossain

zakir@panoramabd.com

General Manager, Merchandising

Afroz Kadir (Tolame)

tolame@panoramabd.com